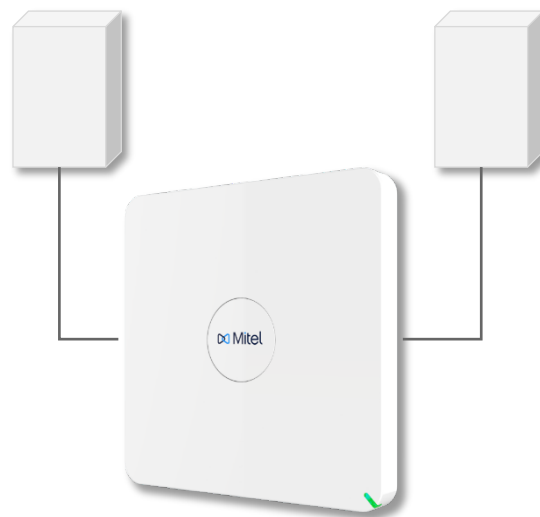


RFP 47 DECT Base Station

The DECT base station that delivers wide and reliable connectivity in challenging environments.

Key Features

- 2 external antenna connectors
- New modern design!
- 40% smaller size compared to the RFP35
- New hardware design to natively run the OMM for up to 1024 users/handsets
- New mounting bracket design for easy installation
- Optional customizable front cover plate for discrete installation or décor matching
- 8 simultaneous voice channel support
- No license required for up to 5 base-station deployments
- Over-the-Air synchronization



The RFP 47 DECT Base Station is made for users with unique wireless coverage needs. This base station can be fitted with external antennas to maximize or focus wireless coverage. When housed in the external casing, the RFP 47 can perform and withstand challenging environments like parking lots and construction tunnels.

Supports 2 External Antennas

The RFP 47 has connectors for 2 external antennas to support specific wireless coverage needs.

Improved Design and Handling

The RFP47 has an unobtrusive design that adapts well to interiors for discreet set ups. The mounting bracket can be separated for independent installations and placements on walls and ceilings.

Can Be Used outdoors

The RFP can be installed in Mitel's Outdoor Housing. The Outdoor Housing's IP66 rated case protects the RFP47 in dusty and wet environments for uninterrupted communication.

GENERAL INFORMATION

- Requires SIP-DECT 8.0 software or higher
- Replaces the RFP37 when installed in Mitel's RFP 4x Outdoor Housing
- Centralized DECT & SIP configuration, clustering administration via separate Open Mobility Manager (OMM) provisioning software
- Supports natively running the OMM provisioning application for installations up to 256 RFPs and 1024 handsets/users.
- Simplified Licensing. No base-station licenses required for up to 5 base-station deployments
- Supports Messaging and Alarms

DECT FEATURES

- All DECT channels supported for maximum use of the DECT capacity (120 duplex channels in EMEA, 50 in US/CAN)
- 12 channel base station with support for 8 simultaneous voice channels per RFP and 4 channels for switching purposes
- GAP standard supported
- Handover and Roaming support
- DSAA authentication between base and handset
- Support of DECT encryption
- Supports Enhanced DECT security
- DECT XQ technology for minimization of interferences in reflecting environments
- Supports Over-the-Air DECT Handset software upgrades
- Supports Over-the-Air Synchronization

INSTALLATION

- New separate mounting bracket to ease installation and wire routing needs
- Supports wall-mount & ceiling-mount
- 1 LED to signal current operating state
- Powered via IEEE 802.3af (Class 2)

NETWORKING

- 1 x IEEE 802.3 10/100BaseT
- 802.3af Power-over-Ethernet (Class 2)
- VLAN Support
- 802.1x Support
- QoS supported by Diffserv / ToS
- NTP time synchronization support

VOIP

- Connect to IP PBX via LAN
- SIP protocol support per RFC 3261
- Secure SIP over TLS, SRTP
- G.711, G.722, G.729ab1 codecs support
- Adaptive jitter compensation
- Echo cancellation / suppression
- Voice Activity Detection
- Comfort Noise Generation

TECHNICAL DATA

- Colour: White
- Dimensions (W x H x D):
 - 150 x 150 x 40 mm
- Weight: 345 g
- Material: ABS
- Connectors:
 - 1 x RJ45 Ethernet Jack
 - Reset Button
 - 2 x SMA External Antenna Jacks
- MTBF Rate: 40 years
- Operating Voltage: 37 VDC min and 57 VDC max
- Current consumption: 85 mA at 55VDC
- Type of ingress protection: IP 20
- Flame resistance UL94 HB
- DECT Frequencies
 - Europe, Middle East
 - Australia, New Zealand
 - South America

ENVIRONMENTAL

- **RFP Operational:**
 - Temperature -10°C to +45°C
 - Humidity 34% at +45°C
 - Humidity 95% at +29°C
- **Storage:**
 - Temperature -40°C to +70°C
 - Humidity 15% at +70°C
 - Humidity 95% at +29°C

REGULATORY STANDARDS EMC/RADIO

- **European Union:**
 - 2014/53/EU (RED)
 - 2011/65/EU (RoHS)
 - EN 301-489-1, 6
 - EN 301 406
 - EN 50385
 - EN 60945 :2002 (Clause 1C, EMC only)
- **Australia / New Zealand:**
 - AS/NZS 4771

SAFETY

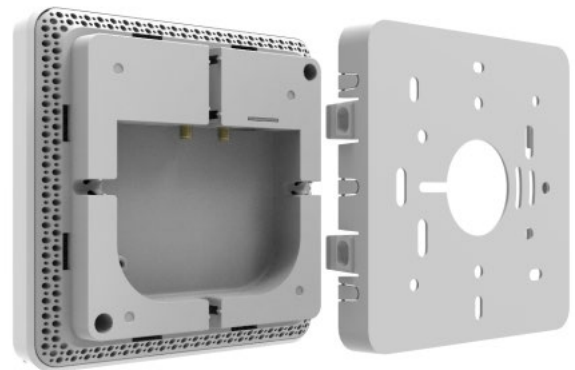
- **European Union:** EN 60950-1
- **Australia/New Zealand:** AS/NZS 60950-1

INCLUDED IN THE BOX

- RFP 47 IP Base Station
- Mounting Bracket, 2 screws & screw anchor
- Circular Mitel Logo Plate
- Installation & regulatory documents

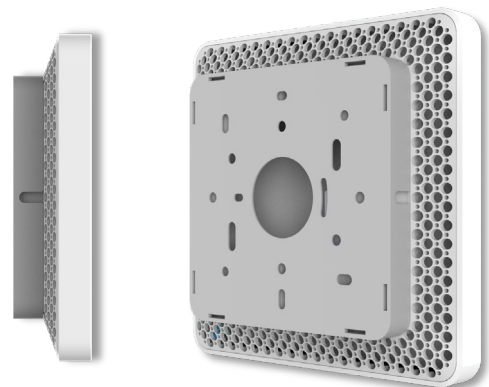
PART NUMBERS

Model	Part Number
RFP 47 Indoor DECT Base Station	50006974
RFP 4x Outdoor Housing (Optional)	50006978
48VDC Ethernet Pwr Adapter 100-240V 802.3af (Optional)	51015131



RFP47 Rear View

Mounting Bracket



RFP47 Side View

RFP47 with Mounting
Bracket attached