



Grandstream Networks, Inc.

GSurf User Manual

Contents

Introduction 3

Installation 4

Minimum Recommended Requirements 4

Login 4

Main Window 5

Configuration 7

Add network cameras/ digital video servers 7

How to watch video stream 8

Remove network cameras/ digital video servers 8

Edit the settings of network cameras/ digital video servers 9

Set up auto recording 9

Replay Tool 10

Local Configuration 10

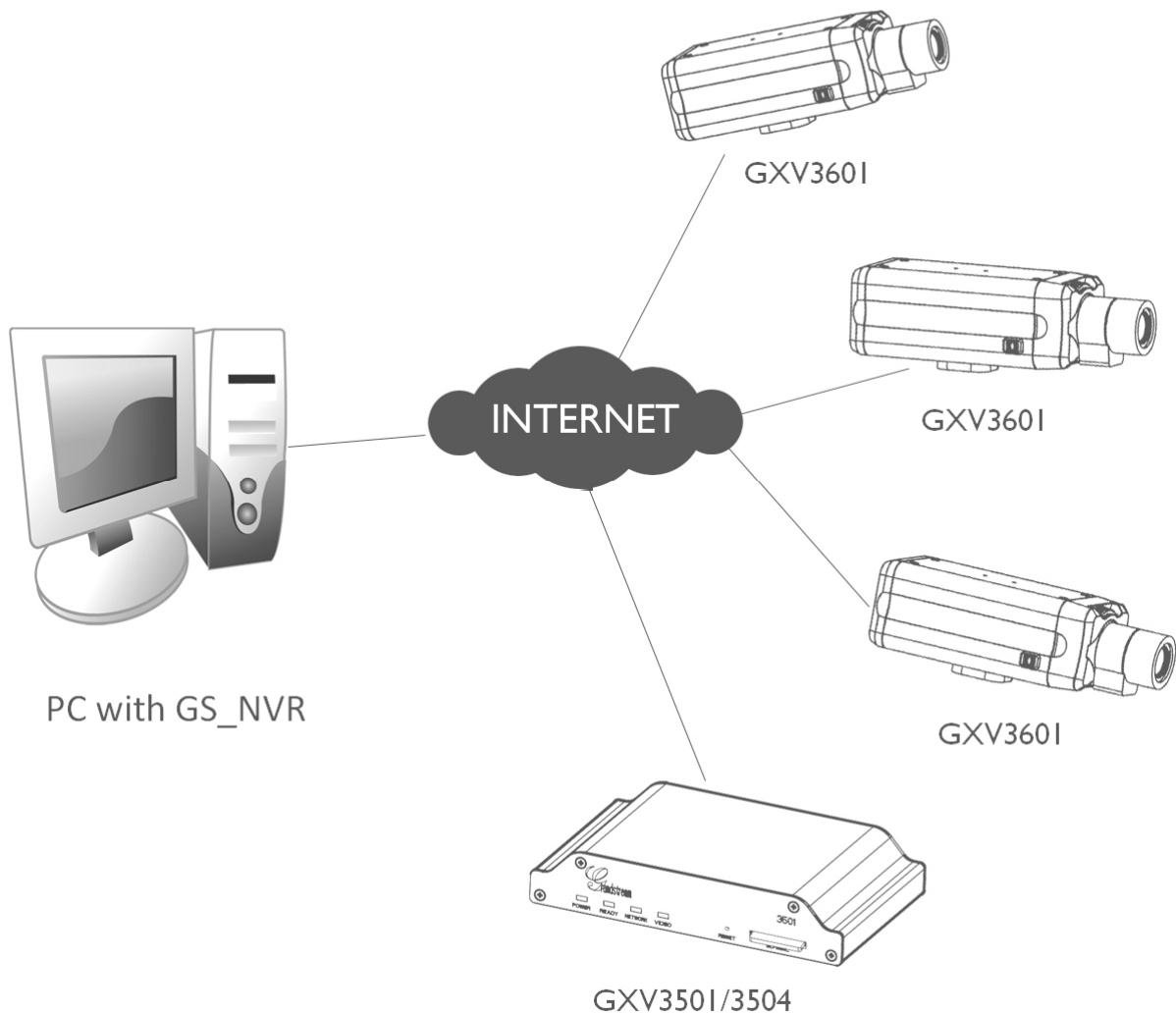
Lock GS_NVR 11

Device List 11

Introduction

The Grandstream Networks Video Recorder is a software package that provides the tools for monitoring and recording surveillance video streams. Video management software enables viewing and managing multiple cameras at once.

This user manual will provide you with a detailed description of buttons, menu items, and instruction on how to integrate your cameras and digital video server with GS_NVR to best satisfy your needs.



Installation Guide

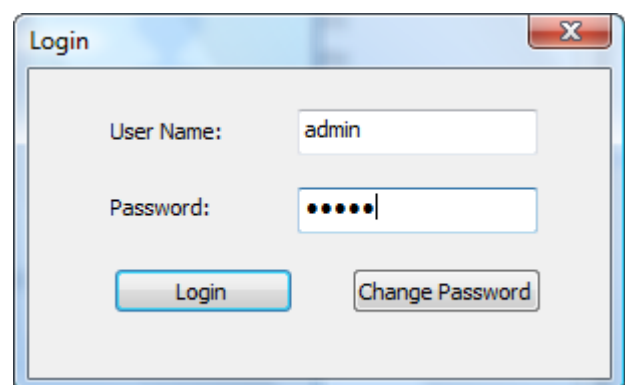
Minimum Recommended System Requirements

- Windows 2000 Server Professional, Windows XP, Windows Vista
- CPU: Intel Pentium 4 or higher, 2 GHz
- RAM: 1 GB (4 GB recommended for larger systems)
- Support for DirectX 8.0 and above

Login

Open GS_NVR. The login page will prompt you for your user name and password. The administrator user name and password are both set to **admin** at the factory default settings.

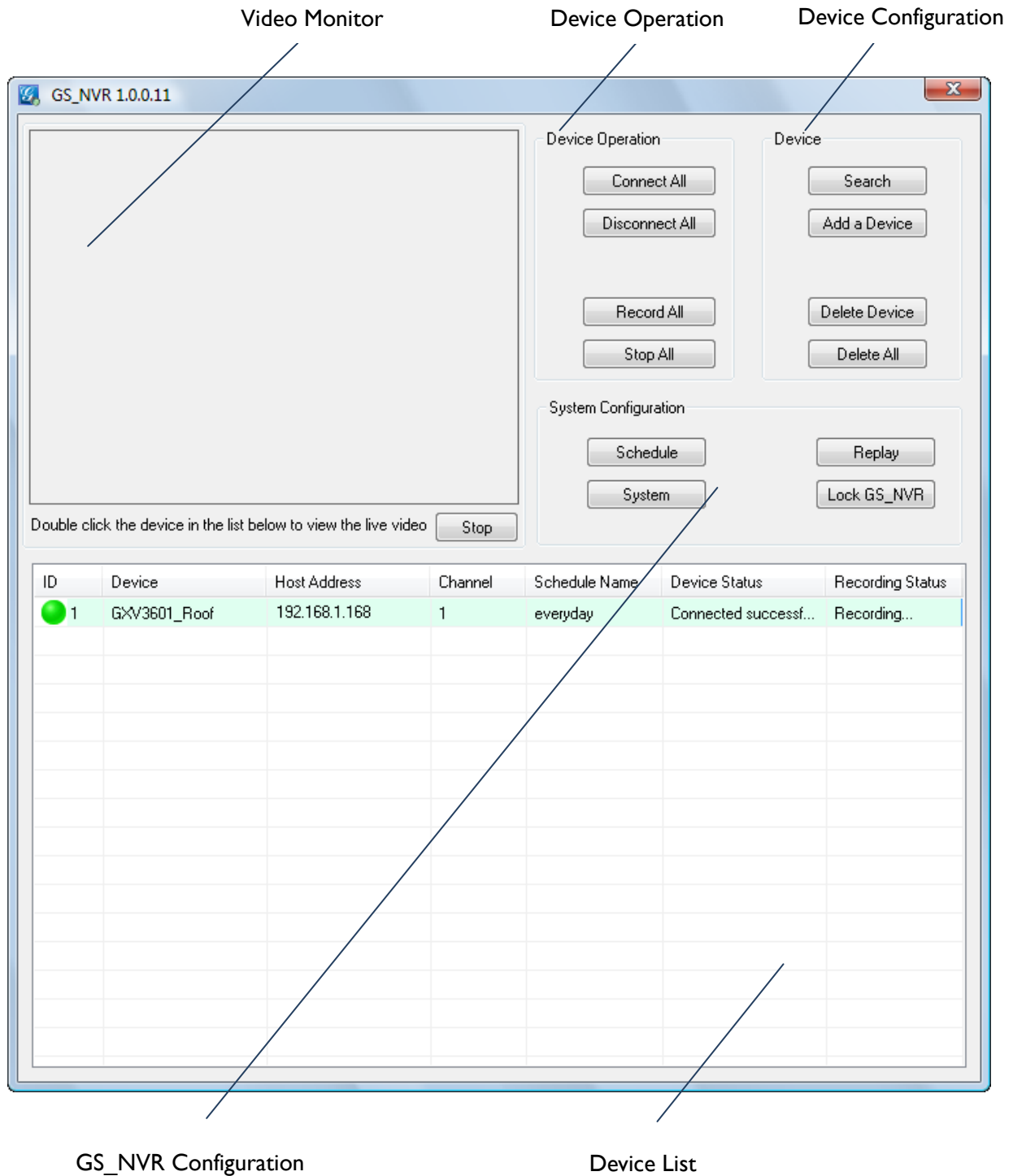
For security purpose, please change the password after the first time you log in to GS_NVR.



The screenshot shows a web browser window titled "Login". Inside the window, there are two text input fields. The first is labeled "User Name:" and contains the text "admin". The second is labeled "Password:" and contains five dots. Below these fields are two buttons: "Login" and "Change Password".

GS_NVR Main Window

The user interface was designed ease-of-use, providing navigation tools that offer quick access to cameras and recording in the system.



Items

Video Monitor - The section displays live video streams from the selected devices.

Device Operation

Connect All – Click this button to connect to all devices that are configured in NVR, except those which are set to record using a schedule.

Disconnect All – Click this button to disconnect all devices that are configured in NVR, except those which are set to record using a schedule.

Record All – Click this button to record video streams from all configured devices, except those which are set to record using a schedule. The recorded file will be saved in **C:\GS_Record**.

Stop All – Click this button to stop recording video streams from all configured devices, except those which are set to record using a schedule.

Device Configuration

Search – Click to search other Grandstream DVS or IP Cameras on the LAN.

Add a Device – Click to add a device to NVR.

Delete Device – Click to delete the selected device from NVR.

Delete All – Click to delete all devices from NVR.

GS_NVR Configuration

Schedule – The tool is used to configure an auto recording schedule. You can add, modify and delete time schedules here.

Replay – This tool provides the ability to replay recorded videos. It also provides a search function which allows you do a search based on the start time, end time, IP address, and channel.

System – This is where you select the recording drives, recording settings and other general settings.

Lock GS_NVR – Click to lock GS_NVR. Once GS_NVR is locked, the settings of *Device Operation*, *Device*, and *System Configuration* sessions, except *Relay*, can't be changed.

Device List – This section lists all the devices added to the NVR. The device status and Recording status will also be shown in this section.

Stream Type– Select the preferred stream, primary stream or secondary.

User Name/password – Enter the user name and password for the device’s web GUI.

RTSP Port – If the device’s web access port is 80, enter 554 as RTSP Trans-Port, otherwise, add 2000 to the device’s web access port and enter here.

Schedule – Select a time schedule for auto recording.

3. Click **Add** to save.

Choose a Stream Type - primary stream or secondary stream

Users may like to watch the live video stream from the web GUI in low resolution mode while recording a copy in high resolution mode due to the limitation of internet bandwidth. In this case, for example, the primary stream can be configured to have better resolution. Users can use the primary stream to record while watching secondary video streams. With GS_NVR.

To configure the primary and secondary stream

1. Login the web configuration pages of the device.
2. Click on **Basic Settings > Video & Audio**.
3. Configure the primary stream and secondary stream according to your preference.

How to watch video streams

From GS_NVR, in the **Device List**, double click on the device, the live video stream will be displayed on the **Video Monitor** area. If the video cannot be played, please double check the device settings, for example, the **host, user name, password** and **RTSP** port.

Remove network cameras/digital video servers

1. From GS_NVR, in the **Device list**, select the device you would to remove.
2. Click **Delete device** to remove the device.

Or

1. GS_NVR, in the **Device list**, right click on the device you would to remove.
2. Click **Delete device** in the popup menu.

Edit the settings of network cameras/digital video servers

1. From GS_NVR, in the **Device list**, select the device you would to edit.
2. Click **Modify device** to open **Modify** dialog.
3. Enter the required information.
4. Click **Modify** to save the changes.

Set up Automatic Recording

GS_NVR can be configured to record the video streams from various channels automatically according to different time schedules. The recorded video file will be saved in **C:\GS_Record**. Follow these steps to set up a schedule. Once a schedule has been entered, it can be reused as often as necessary.

Add Recording Time Schedules

1. From GS_NVR, click **Schedule**.
2. The **Recording Time Schedule** window will pop up.
3. Enter the **schedule name, date, start time and end time**.
4. Click **Add** to save the settings.

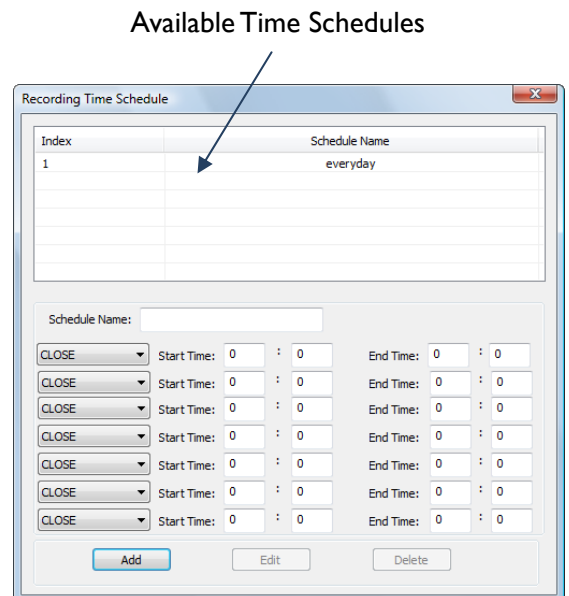
NOTE: Available schedule will be listed on the top of the **Recording Time Schedule** window.

Edit Time Schedules

1. From GS_NVR, click **Schedule**.
2. The **Recording Time Schedule** window will pop up.
3. Select the schedule you would like to edit.
4. Enter the required information.
5. Click **Edit** to save the changes.

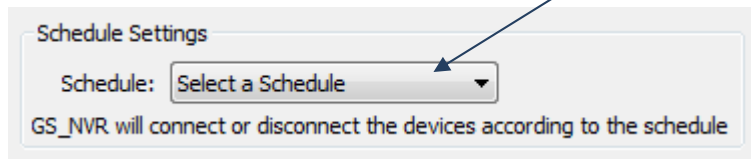
Remove Time Schedules

1. From GS_NVR, click **Schedule**.
2. The **Recording Time Schedule** window will pop up.
3. Select the schedule you would like to remove.
4. Click **Delete** to remove the schedule.



Configure the GS_NVR to record automatically

1. From GS_NVR, in **Device List**, right click on the device from which you would like to record video stream.
2. Click **Modify** on the popup menu to open **Modify** dialog.
3. In **Schedule Settings** section, select a schedule.



NOTE: The available schedule you created in **Recording Time Schedule** will be listed in the **Select a Schedule** dropdown list.

4. Click **Modify** to save all the changes.

Replay Tool

This tool provides the ability to replay the recorded videos. It also provides a search function which allows you to perform a search based on the start time, end time, IP address, and channel.

Local Configuration

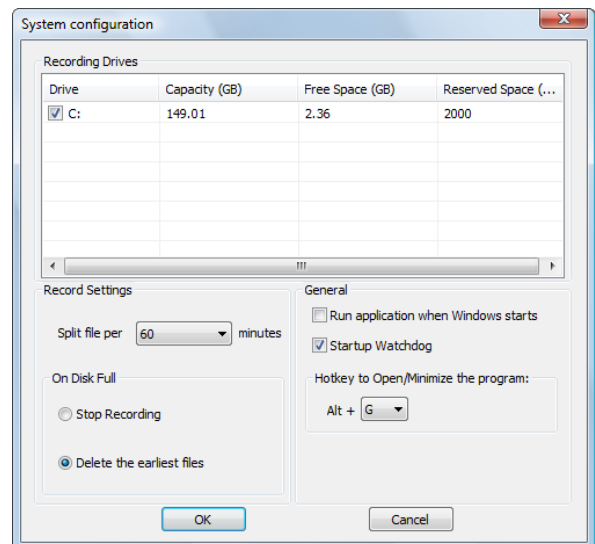
Recording Settings Items

Recording Drives – This section displays the names, total space and free space of the local disks. This section also lets you select which local disks will be used to store recorded video files. You can also configure the reserve space for each disk. If multiple disks are chosen, GS_NVR will start from the first disk until the free space equals the reserved space, and then go to the next one.

On Disk Full – When a disk is full, users can choose to stop all recordings or keep recording and store them by deleting the oldest files on the disk.

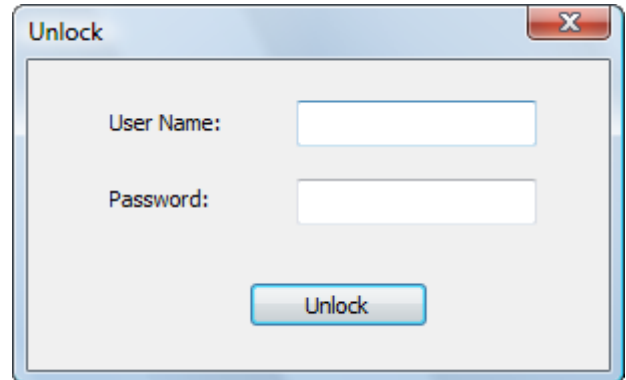
Split Files per X minutes – Configures the duration of each video recording.

Startup Watchdog – Let's you to configure whether to run Watchdog. Watchdog is a program that will watch your GS_NVR for system hang ups and reboot it as needed in your absence.



Lock GS_NVR

For security purpose, you can lock the GS_NVR to protect it from being changed by someone else. To lock GS_NVR, from GS_NVR, click **Lock GS_NVR**. Then the **Lock GS_NVR** button will turn out to be **Unlock**. Click the **Unlock**, a dialog will prompt for user name and password. Enter you user name and password to unlock it.



Device List

All devices which have been added to GS_NVR will be listed in this section. The detail information of the device, for example, the device connection status and recording status, will also be displayed here. You can also right click on the device to do device configurations.

Popup menu on right click on the devices

ID	Device	Host Address	Channel	Schedule Name	Device Status	Recording Status
1	GXV3601_Roof		1	everyday	Connected successf...	Recording...

The image shows a table with columns for ID, Device, Host Address, Channel, Schedule Name, Device Status, and Recording Status. A right-click context menu is open over the first row, listing options: Connect(C), Disconnect(G), Record(R), Stop record(S), Modify device(M), and Delete device(D). Arrows point from the text above to the Host Address column, the Device Status column, and the Recording Status column.

Items on popup menu

- Connect** – Click to connect to the selected device.
- Disconnect** – Click to disconnect the selected device.
- Record** – Click to start recording the video stream from the selected device.
- Stop record** – Click to stop recording the video stream from the selected device.
- Modify device** – Click to modify the settings of the selected device.
- Delete device** – Click to delete the selected device.