

# SIP Paging Amplifier

The new CyberData SIP-enabled Paging Amplifier provides an easy method for implementing a loud IP-based overhead paging system for loud areas, warehouses, manufacturing areas, and outdoor areas.

Now with up to 9 user-stored messages and 25 watts of driving power (802.3at), the Amplifier provides direct drive of up two 8 Ohm horns.

The interface is compatible with most SIP-based IP PBX servers that comply with the SIP RFC 3261. For non-SIP environments, the Paging Amplifier can be configured to listen to multicast address and port number combinations to form paging zones.

## Can receive pages directly from Polycom phones

### New Features

- SIP Enhanced interoperability for hosted environments
  - CyberData has maintained one of the most comprehensive list of IP PBX servers certified to work with CyberData
- NEW SECURITY FEATURES:
  - Support for security code access for SIP paging
  - Autoprovisioning via HTTPS
  - HTTPS web based configuration
- Support for G.722 codecs
- 802.11q VLAN tagging
- Configurable sense input for use with fault detection or lighted button kit
- Configurable event generation for device health and status monitoring
- Optional direct connect RGB strobe kit connection
- 9 user-uploadable page messages

### Features

- SIP and Simultaneous Multicast
- Page to Polycom phones
- Dual-speed ethernet 10/100 Mbps
- Web-based configuration
- PoE 802.3at and 802.3af-enabled
- Line-in for background music
- Line-out connector
- DTMF controlled relay
- Direct 8 Ohm speaker drive
- User-uploadable tones and messages
- Digital and manual volume control
- Second SIP endpoint "Night Ringer"
- Autoprovisioning
- Auto-call voice message from input port sense
- Can support two horns
- HTTP Command Interface
- 10 channel prioritized Multicast ports
- Built-in diagnostics
- Delayed page support



Loudspeaker (part #011068) must be purchased separately.

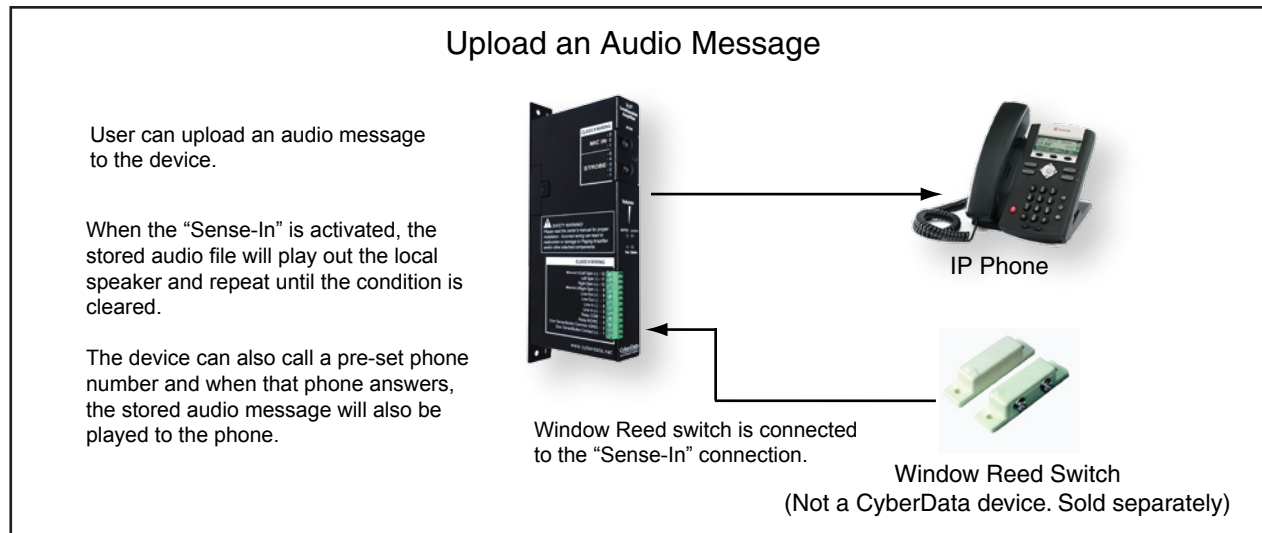
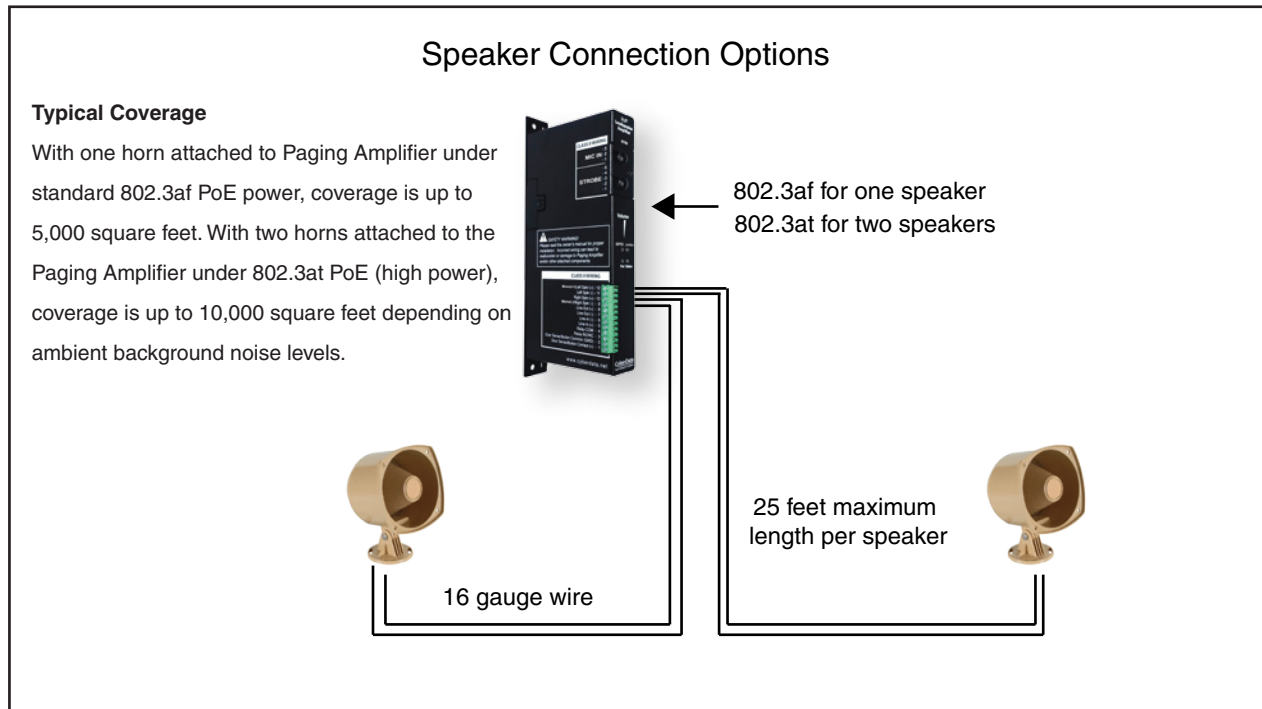
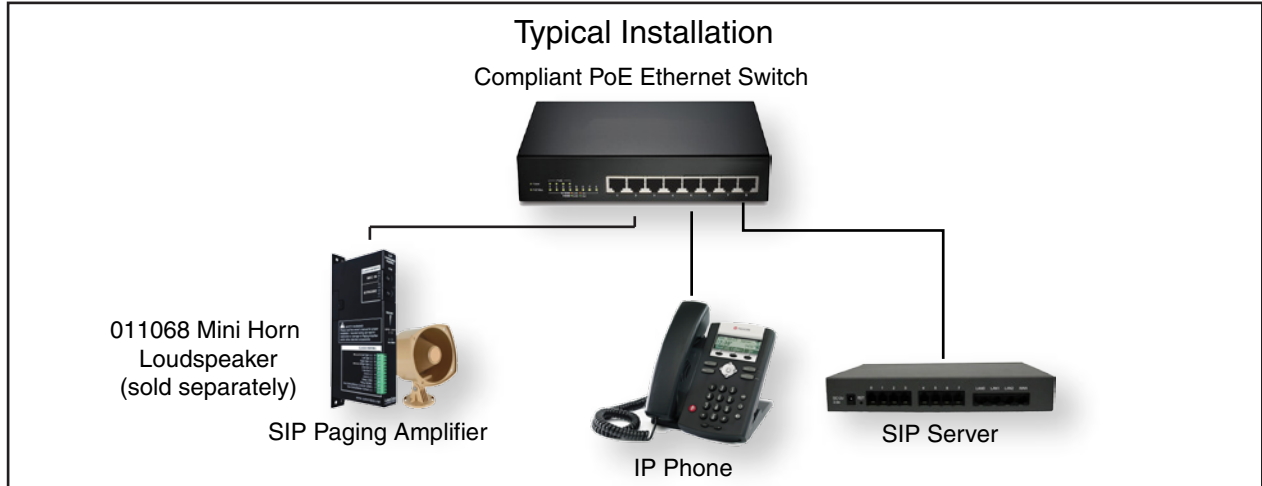
### Specifications

Ethernet I/F	10/100 Mbps
Protocol	SIP RFC 3261 Compatible
Power Input	PoE 802.3at or 802.3af
Audio Output	802.3af - SPL 114 dB @ 1 meter* 802.3at - SPL 117 dB @ 1 meter*
<b>Line In:</b>	
Input Signal Amplitudes	2.0 VPP maximum
Input Impedance	10k Ohm
<b>Line Out:</b>	
Output Signal Amplitudes	2.0 VPP maximum
Output Level	+2dBm nominal
Total Harmonic Distortion	0.5% maximum
Output Impedance	10k Ohm
Operating Range	Temperature: -40° C to 55° C (-40° F to 131° F) Humidity: 5-95%, non-condensing
Storage Temperature	Temperature: -40° C to 70° C (-40° F to 158° F)
Storage Altitude	Up to 15,000 ft. (4573 m)
Payload Types	G.711 a-law, G.711 μ-law, and G.722
Dimensions**	1.042 in. [26.5 mm] Length 3.295 in. [83.7 mm] Width 7.795 in. [198.0 mm] Height
Weight	1.4 lbs. [0.63 kg]
Boxed Weight	2.0 lbs. [0.90 kg]
Compliance	CE; EMC Directive – Class A EN 55032 & EN 55024, LV Safety Directive – EN 60950-1, RoHS Compliant, FCC; Part 15 Class A, Industry Canada; ICES-3 Class A, IEEE 802.3 Compliant
Warranty	2 Years Limited
Part Number	011324
Loudspeaker Part Number	011068

\*When used with the 011068 Mini Horn.

\*\*Dimensions are measured from the perspective of the product being upright with the front of the product facing you.

# SIP Paging Amplifier



# SIP Paging Amplifier

